

**City of Nottingham and Nottinghamshire
Economic Prosperity Committee
7 June 2024**

Subject:	Appointments to East Midlands Combined County Authority Committees		
Presenting authority / representative):	Adam Hill, Mansfield District Council Jodie Townsend, East Midlands Combined County Authority		
Report author and contact details:	Adam Hill: ahill@mansfield.gov.uk Jodie Townsend: Jodie.Townsend@eastmidsdevo.org.uk		
Other colleagues who have provided input:	District 7 Borough Authorities East Midlands Combined County Authority Board		
Key Decision	<input type="checkbox"/> Yes	<input checked="" type="checkbox"/> No	Subject to call-in <input type="checkbox"/> Yes <input checked="" type="checkbox"/> No
Value of decision: N/A	<input type="checkbox"/> Revenue <input type="checkbox"/> Capital		
Authorities affected: All Nottinghamshire Districts and Boroughs	Date of consultation with relevant authorities: N/A		
Summary of issues (including benefits to citizens/constituent authorities): The establishment of the East Midlands Mayoral County Combined Authority (EMCCA) will require non-constituent members from the District and Borough councils to be selected and appointed.			
Exempt information: Not applicable			
Recommendation(s): Nottinghamshire Economic Prosperity Committee is recommended to:			
1	Agree the nominations and substitutes to the committees of the East Midlands Combined County Authority as set out in Appendix A		
2	Agree how EPC will provide nominations and substitutes to the committees of the East Midlands Combined County Authority that are not covered by Appendix A		

1. Reasons for recommendations

- 1.1 To support district and borough councils in their understanding of the ask from EMCCA and ensure the right representatives are brought forward for nomination.
- 1.2 To agree the approval of outstanding non-constituent nominations to EMCCA committees in alignment with current EMCCA requirements.
- 1.3 To ensure that district and borough councils have formal representation at EMCCA.

2. Background

- 2.1 EMCCA came into being on 28 February 2024 and held its first Board meeting on the 20 March 2024. At its inaugural Board meeting the EMCCA Board considered a number of procedural items to enable it to be able to operate as an effective organisation, this included statutory officer appointments and adoption of a constitution.
- 2.2 The Levelling Up and Regeneration Act 2023 allows for Combined County Authorities to designate a nominating body for the purposes of nominating Non-Constituent Members of a Combined County Authority, on condition that those nominating bodies accept that designation.

- 2.3 On 20 March EMCCA agreed to designate to Nottingham EPC the position as the nominating body for Nottinghamshire District and Borough Non-Constituent appointments.
- 2.4 The EPC accepted the designation at its meeting on 5 April 2024 and also agreed the elected members and substitute appointments to the EMCCA Board.

3. Appointments to EMCCA Committees

- 3.1 EMCCA has recently agreed an initial governance framework that is needed to undertake its statutorily defined functions. This consists of the following:
- EMCCA Board (the Mayor and Cabinet)
 - Transport Advisory Committee
 - Skills and Employment Advisory Committee
 - Investment Committee
 - Business Advisory Board
 - Overview and Scrutiny Committee
 - Audit and Governance Committee.
- 3.2 EMCCA is seeking, from the EPC, nominations to the committees it has agreed (as a 'Day 1' minimum) are necessary to meet its legal and operational requirements, those being:
- Transport Advisory Committee
 - Skills and Employment Advisory Committee
 - Investment Committee
 - Overview and Scrutiny Committee
 - Audit and Governance Committee.
- 3.3 As with nominations to the EMCCA Board, it is for the EPC to formally approve members to EMCCA governance arrangements as designated. However, it is for district and borough councils to bring forward those nominations.
- 3.4 At the meeting on 5 April the EPC tasked officers with undertaking engagement with all Nottinghamshire District and Borough Councils to bring forward a list of nominations for consideration to this meeting for consideration and approval.
- 3.5 Officers applied a number of key principles to this process to take into account concerns raised by both EPC and by EMCCA, these were as follows:
- That all District and Borough Councils be represented on appointments to EMCCA with at least 1 position
 - Once each council gets 1 seat the remainder of required nominations are allocated according to preference/expertise with no council having more than 2 seats on the overall list of nominations
 - That positions be allocated to appropriate skillsets in alignment with the EMCCA guidance where possible
 - Given the complexity of working out political balance requirements across a county area it is suggested that overall nominations take into account the political leadership of each District and Borough Council and appropriately reflect this make up in nominations
- 3.6 Set out at **Appendix A** is a list of elected members nominated to EMCCA committees to be considered and approved by EPC and meets the requirements as set out in 3.5 and in line with the Guidance in **Appendix B**.
- 3.7 To support this process EMCCA provided a guidance note that sets out key considerations that it would like the nominating bodies to consider when nominating to EMCCA Committees. The guidance note is attached as **Appendix B**. This guidance has been designed and developed to support EPC members to bring forward the right representatives and is to be used for information and discussion at this stage.
- 3.8 It is a matter for each nominating body as to how they apply the guidance provided, however it should be noted that the guidance is provided in the spirit of partnership and to deliver effective district and borough representation at EMCCA.

- 3.9 Any councillor nominated to EMCCA committees should expect to receive an appropriate induction into EMCCA governance arrangements and the role and responsibilities of the governance body which they have been nominated to.
- 3.10 In accordance with good governance anyone nominated, must not be part of the executive and therefore must not either be a member or substitute of the EMCCA Board. Therefore if the nominations in Appendix A are accepted, Mayor Andy Abrahams (Mansfield District Council) , will stand down from his position of Substitute to the EMCCA Board.
- 3.11 EMCCA is in the process of pulling together its calendar of meetings for 2024/25, the next meeting of the EMCCA Board will on 17 June to take account of each Constituent Council's Annual General Meeting. It is anticipated that the calendar of meetings for EMCCA will be approved at this June meeting.

4. Other options considered in making recommendations

- 4.1 EMCCA considered a wide range of membership possibilities when drafting the initial version of its constitution, however its commitment to inclusivity of District and Borough Councils given their position as key partners ruled out options that did not include District and Borough Council representation in its governance framework.

5. Consideration of Risk

- 5.1 In order to ensure appropriate representation of District and Borough Councils in Nottinghamshire on East Midlands Combined County Authority, nominations as requested will need to be made by the Economic Prosperity Committee.
- 5.2 The guidance provided by East Midlands Combined County Authority at Appendix B of this report, if not considered could impact the diversity and geographical representation of Nottinghamshire.

6. Best Value Considerations, including consideration of Make or Buy where appropriate

- 6.1 No best value considerations have been identified in the content of this report.

7. Finance colleague comments (including implications and value for money/VAT)

- 7.1 Guidance on allowances for District and Borough Council representatives on East Midlands Combined County Authority Board and Committees will be provided following the Independent Remuneration Panel review.

8. Legal colleague comments

- 8.1 Legal implications are included in the body of the report

9. Other relevant comments

- 9.1 The Combined County Authority has three types of membership outside the position of mayor, these are as follows:
- **Constituents:** These are the 4 local authorities which the devolution of powers outside of mayoral functions have been devolved to (Derbyshire County Council, Nottinghamshire County Council, Derby City Council and Nottingham City Council). These are voting members of the EMCCA Board.
 - **Non-Constituents:** These are key partners/ stakeholders recognised within the EMCCA governance arrangements. They are defined as an individual nominated as a representative by a nominating body designated as such by the CCA in accordance with section 11 of the Levelling-up and Regeneration Act 2023. Non-Constituents are non-voting members across the EMCCA governance arrangements.
 - **Associates:** an individual appointed to be a member of the CCA in accordance with section 12 of the Levelling-up and Regeneration Act 2023

- 9.2 District and Borough Council representatives come under the definition of Non-Constituents; it should be noted that they are not the only grouping that would come under this definition.
- 9.3 The East Midlands Combined County Authority 2024 Regulations allow the Combined County Authority to have no more than eight non-constituent and associate members on its Board. This allows the Combined County Authority to appoint up to a maximum total number of 8 Non-Constituent Members and Associate Members.

10. Equality Impact Assessment (EIA)

Has the equality impact of the proposals in this report been assessed?

No

Yes

11. Data Protection Impact Assessment (DPIA)

Has the data protection impact of the proposals in this report been assessed?

No

Yes

12. Carbon Impact Assessment (CIA)

Has the carbon impact of the proposals in this report been assessed?

No

Yes

13. List of background papers relied upon in writing this report (not including published documents or confidential or exempt information)

13.1 EMCCA Governance and Constitution Board Paper:
[Item 5 - Governance and Constitution Report.pdf \(derbyshire.gov.uk\)](#)

13.2 EMCCA Constitution:
[Item 5 - Appendix A.pdf \(derbyshire.gov.uk\)](#)

14. Appendices

14.1 Appendix A – Elected Members nominated to EMCCA Committees

14.2 Appendix B – EMCCA Guidance Note for appointments by nominating bodies

14.3 Appendix C – EMCCA FAQs

Appendix A

East Midlands Combined County Authority (EMCCA)

District and Borough Councils - Sub Group Nomination Form

Sub Group	Purpose	Nomination Name	Reserve lower priority Name
Transport Advisory Committee	This is an advisory committee to the Combined County Authority and the Mayor; it seeks to provide strategy advice and guidance on Transport matters in support of the exercise of Combined County Authority and Mayoral functions.	Cllr Paul Peacock – Leader N&SDC Cllr Mathew Relf, Cabinet Member Regeneration and Planning Ashfield DC	Cllr David Pidwell - Bassetlaw Cllr Peter Bales Broxtowe
Skills & Employment Advisory Committee	This is an advisory committee to the Combined County Authority and the Mayor; it seeks to provide strategy advice and guidance on Skills and Employment matters in support of the exercise of Combined County Authority and Mayoral functions.	Cllr Gabriella Bunn Broxtowe Cllr Jo White Deputy Leader Bassetlaw	Cllr Matthew Spoons N&SDC Cllr Mathew Relf, Ashfield
Investment Committee	This is an advisory committee to the Combined County Authority and the Mayor; it seeks to provide strategy advice and guidance on Investment matters in support of the exercise of Combined County Authority and Mayoral functions.	Cllr John Clarke Gedling Cllr Neil Clarke, Leader RBC	Craig Whitby Mansfield Cllr Greg Marshall Broxtowe
Overview & Scrutiny Committee	This is a regulatory committee of the Combined County Authority; these are Committees that the Combined County Authority must have by law.	Mayor Andy Abrahams MDC Cllr Abby Brennan, Dep Leader RBC	Only 2 nominations
Audit & Governance Committee	This is a regulatory committee of the Combined County Authority; these are Committees that the Combined County Authority must have by law.	Paul Henshaw (MDC) Vacant	Only the one nomination

Appointments by Nominating Bodies

East Midlands Combined County Authority

May 2024

This guidance note has been developed to provide guidance to designated nominating bodies to the East Midlands Combined County Authority (EMCCA) on the nomination of Councillors from District and Borough Councils to the Board and wider Committees of the Combined County Authority.

The guidance provided is intended as such, recognising that the decision on how and who to nominate is a matter for each designated nominating body. However, the guidance provided seeks to support the nomination of individuals that can best represent the District and Boroughs of each County area and contribute effectively within the Combined County Authority governance arrangements.

Background

1 The Levelling Up and Regeneration Act 2023 allows for Combined County Authorities to designate a nominating body for the purposes of nominating Non-Constituent Members of a Combined County Authority, on condition that those nominating bodies accept that designation.

2 On 20 March the Combined County Authority agreed to designate the positions of nominating body for Nottinghamshire and Derbyshire District and Borough Non-Constituent appointments to:

- Derbyshire Strategic Leadership Board (D2 SLB)
- Nottinghamshire Economic Prosperity Committee (EPC)

3 The nominations by the nominating bodies to the Combined County Authority would be for District and Borough Councillor representation.

4 Officers from the County Councils, District and Borough Councils and the Combined County Authority have contributed to this guidance note.

Requirement

5 The Combined County Authority has agreed an initial governance framework that provides 4 District and Borough nominated representatives on its Board and on each of its Committees, 2 from each county area. In accepting the designation provided by the Combined County Authority each nominating body is requested to provide the nominations to the Combined County Authority Board and its Committees.

6 The ask from the Combined County Authority is that each nominating body provides 2 representatives to be non-constituent members to each of the following Combined County Authority Board and Committees:

Combined County Authority Board	This is the decision-making body for all non-mayoral functions devolved to the Combined County Authority. It is responsible for the approval of all Combined County Authority strategy and the budget.
Transport Advisory Committee	This is an advisory committee to the Combined County Authority and the Mayor; it seeks to provide strategy advice and guidance on Transport matters in support of the exercise of Combined County Authority and Mayoral functions.
Skills & Employment Advisory Committee	This is an advisory committee to the Combined County Authority and the Mayor; it seeks to provide strategy advice and guidance on Skills and Employment matters in support of the exercise of Combined County Authority and Mayoral functions.

Investment Committee	This is an advisory committee to the Combined County Authority and the Mayor; it seeks to provide strategy advice and guidance on Investment matters in support of the exercise of Combined County Authority and Mayoral functions.
Overview & Scrutiny Committee	This is a regulatory committee of the Combined County Authority; these are Committees that the Combined County Authority must have by law.
Audit & Governance Committee	This is a regulatory committee of the Combined County Authority; these are Committees that the Combined County Authority must have by law.

7 The nominations by EPC and D2 SLB to these Combined County Authority governance bodies are for non-constituent membership.

8 Non-constituent members are individual members of the Combined County Authority who are nominated as members by a body designated by the Combined County Authorities, therefore they are nominated to represent a group or organisation. Non-constituent members are non-voting unless the voting members resolve otherwise.

9 Non-constituent members play a key role within the Combined County Authority governance framework in ensuring the bodies/ organisations that they represent are able to influence the agenda, decision-making, investment proposals and strategy developments.

Guidance for Nominations

10 The following guidance exists to support nominating bodies in the process of nominating to Combined County Authority positions.

11 It is a matter for each nominating body as to how they apply the guidance provided, however it should be noting that the guidance is provided in the spirit of partnership and to deliver effective District and Borough representation at the Combined County Authority.

Skillsets and Knowledge

12 Having an appropriate skillset and knowledge base that fits the role and responsibilities of each governance body will allow nominated individuals to play a more effective role within the body they have been nominated to and represent EPC or D2 SLB more effectively.

13 Individuals nominated need to understand the strategic nature of a Combined County Authority, as its focus will be on taking a region wide approach that benefits the region as a whole. Nominated individuals therefore need to be able to take a County wide approach to representing their nominating body rather than the local authority that they represent.

14 Individuals will benefit from having the appropriate thematic area knowledge to effectively represent, communicate, collaborate and understand regional aspirations and objectives.

15 Guidance is therefore provided as follows when making appointments:

Combined County Authority Board	<p>Nominated individuals should be Leaders of District and Borough Councils who would generally have a good understanding of organisational responsibility as it relates to vision, strategic objectives and representation of an organisation.</p> <p>They should have an ability to represent their nominating body (and wider Council Leaders) on matters of strategic policy to the Combined County Authority, and are able to effectively liaise with key individuals on behalf of their nominating body to ensure that they effectively represent that nominating bodies views.</p>
--	---

	<p>In representing the nominating body at the key decision-making Board of the Combined County Authority the individual would benefit from an ability to provide political leadership in a collective responsibility setting that seeks to take decisions based on consensus.</p>
<p>Transport Advisory Committee</p>	<p>The preference is that nominated individuals should be Lead Members for Transport and/or Place (or appropriate alternative such as backbencher with specialist knowledge) who will have a good understanding of regional strategic transport needs and understand terminology and approaches that cover public transport provision, highways and wider transport matters.</p> <p>An understanding of the purpose of the Local Transport Plan, sustainable transport, bus travel, rail and transport connectivity would be beneficial.</p> <p>They should have an ability to represent their nominating body (and wider Council Leaders) on matters of strategic transport policy to the Combined County Authority, and are able to effectively liaise with key individuals on behalf of their nominating body to ensure that they effectively represent that nominating bodies views.</p>
<p>Skills & Employment Advisory Committee</p>	<p>The preference is that nominated individuals should be Lead Members for employment, skills and adult learning, or economic growth (or appropriate alternative such as backbencher with specialist knowledge) who will have a good understanding of regional strategic need and understand terminology and approaches that cover public transport provision, highways and wider transport matters.</p> <p>An understanding of the purpose of a regional skills strategy, adult education, employment schemes and a Local Skills Improvement Plan would be beneficial.</p> <p>They should have an ability to represent their nominating body (and wider Council Leaders) on matters of strategic skills and employment policy to the Combined County Authority, and are able to effectively liaise with key individuals on behalf of their nominating body to ensure that they effectively represent that nominating bodies views.</p>
<p>Investment Committee</p>	<p>The preference is that nominated individuals should be Lead Members for Finance, or Economic Growth (or appropriate alternative such as backbencher with specialist knowledge) who will have a good understanding of regional strategic need and understand terminology and approaches that cover the development, decision-making and delivery of investment programmes and projects</p> <p>An understanding of Assurance Frameworks, Her Majesty's Treasury Green Book requirements and the process for the developing and approval of business cases would be beneficial.</p> <p>They should have an ability to represent their nominating body (and wider Council Leaders) on matters of strategic investment to the Combined County Authority, and are able to effectively liaise with key individuals on behalf of their nominating body to ensure that they effectively represent that nominating bodies views.</p>
<p>Overview & Scrutiny Committee</p>	<p>The preference is that nominated individuals should be Chairs or experienced Members of Overview & Scrutiny Committees (or appropriate alternative if committee system) who will have a good understanding of the role of the scrutiny function in a strategic context and accountability standards and practices.</p>

	<p>An understanding of performance management, strategic policy development and holding decision-makers to account would be beneficial.</p> <p>They should have an ability to represent their nominating body (and wider Council Leaders) on matters of strategic accountability to the Combined County Authority, and are able to effectively liaise with key individuals on behalf of their nominating body to ensure that they effectively represent that nominating bodies views.</p>
<p>Audit & Governance Committee</p>	<p>The preference is that nominated individuals should be Chairs, past Chairs or experienced Audit Committee Members who will have a good understanding of local authority financial affairs, risk management, governance and Member standards and code of conduct.</p> <p>An understanding of an organisational approach to internal systems of control, the Nolan Principles that govern Member behaviour and constitutions would be beneficial.</p> <p>They should have an ability to represent their nominating body (and wider Council Leaders) on matters of audit, risk, governance and finance to the Combined County Authority, and are able to effectively liaise with key individuals on behalf of their nominating body to ensure that they effectively represent that nominating bodies views.</p>

16 Political balance applies to the regulatory committees (Overview and Scrutiny/ Audit and Governance), it may therefore be more difficult to apply guidance on skillsets to these positions when taking political balance into account.

17 The Combined County Authority will seek to provide appropriate induction to individuals nominated and support officers where appropriate to the above governance bodies, training as appropriate and ensure they are provided with appropriate briefings and information to enable them to fulfil their role.

18 It is a decision for each nominating body on how they plan to effectively utilise their nominated members to the Combined County Authority to ensure that they are providing a County wide approach and perspective.

Geography

19 Having an approach that considers geographical representation across the scope of its nominations to the Combined County Authority in order to ensure that both the North and South of each County is appropriately represented across nominations will provide a wider range of views and experiences to the Combined County Authority.

20 Given the number of positions that the Combined County Authority seeks nominations for, guidance is provided that all District and Borough Councils within each County area are represented in the nomination process and therefore receive at least 1 nominating position.

21 Based on geography, it is suggested that each council gets 1 seat and then the remainder of required nominations are divided up according to preference/expertise with no council having more than 2 seats on the overall list of nominations to the Combined County Authority.

Diversity

22 To make the best possible decisions the Combined County Authority Board and Committees would benefit from having a diverse and inclusive leadership. Boards and committees made up of people with a mix of experience and skills gained from a range of backgrounds and lived experience that will bring fresh ideas, greater challenge and more robust decision making to the Combined County Authority.

23 Nominating bodies will want to consider nominations from those who are reflective of local communities in terms of gender, ethnicity, disability and sexuality who will be more equipped to understand our communities served.

24 It is important that our democratic organisations and public bodies strive to reflect the communities that they serve, and that we acknowledge the challenges and imbalances when they do not. Poor representation is a bad thing not just for those who are under-represented and suffer the consequences of a decision-making process that does not reflect their needs or interests, but for the institutions themselves. When they do not represent considerable parts of the population, they lose their legitimacy.

Political Balance

25 Political balance only applies to Combined County Authority appointments to its regulatory committees, and only to constituent council representation. Nevertheless, ensuring appropriate political representation across all nominations to the Combined County Authority will ensure an appropriate representation of political opinion and view from each county area.

26 Given the complexity of working out political balance requirements across a county area it is suggested that overall nominations take into account the political leadership of each District and Borough Council and appropriately reflect this make up in nominations.

27 For example, if 12 positions are available to nominate to the Combined County Authority, you could divide the number of nominations by the number of non-constituent councils and multiply this by the political leadership across all authorities to give an indicative balance.

28 For the Overview and Scrutiny Committee and Audit and Governance Committee, nominations will need to take into account the political balance requirements that will be set out in each nominating body report.

Role Profiles

29 Those nominated to Combined County Authority Board and Committees on behalf of each nominating body are expected to represent the views and objectives of the nominating body above that of their individual local authority.

30 Each Councillor nominated should act within the scope given to them by the nominating body which on occasion may need to be clarified.

31 It is the responsibility of the individual nominated to ensure that the nominating body is informed of key decisions, strategy development and thematic areas for discussion at a Combined County Authority level and that the nominating body has an opportunity to consider representation that it would like that nominated councillor to make.

32 Nominated representatives should make themselves aware of what the Combined County Authority expects from them. In so doing, a representative may seek information in relation to the Combined County Authority Constitution, Committee Terms of Reference, accounts etc.

33 Nominated representatives are expected to operate within the rules and/or Constitution of the Combined County Authority and adhere to the Code of Conduct for the Combined County Authority and their own local authority. Representatives will not disclose any information that is confidential to the Combined County Authority who accept that such information may be required to be discussed in private session by a nominating body.

34 Nominated representatives are expected to attend meetings of the Combined County Authority to which appointed; to report on the activities of the Combined County Authority to the nominating body; the impact of those activities on the nominating body

35 Nominated representatives should take an active and informed role in the affairs of the Combined County Authority and in the appropriate representation of the nominating body;

36 Nominated representatives should make independent personal judgements in line with their Duty of Care to the Combined County Authority and the nominating body In so doing, to ensure that they are not

representing the views and political position of their own political party and/or local authority make representations and decisions that are in the best interests of the nominating body.

37 Nominated representatives should inform the nominating body and any specific local authority Leader when matters specifically relating to that county or their local authority are to be discussed at a future Combined County Authority meeting.

What is the Combined County Authority and how do District & Boroughs fit into its governance?

East Midlands Combined County Authority
May 2024

Purpose

This guidance note has been developed to provide District and Borough Councils across Derbyshire and Nottinghamshire with key information on the East Midlands Combined County Authority.

What is devolution?

Regional devolution refers to the process by which specific powers and decision-making authority are transferred from central government to subnational regions within a country. It aims to empower local communities and enhance their ability to address regional needs and priorities.

It is not about taking powers away from local authorities that already exist, rather bringing powers to the region from central government to empower regions, fostering better local governance and responsiveness to regional concerns.

What is the East Midlands Combined County Authority (EMCCA)?

The East Midlands Combined County Authority (EMCCA) has been created as part of the devolution deal between the Government and the four upper tier councils of Derbyshire County Council, Nottinghamshire County Council, Derby City Council and Nottingham City Council.

EMCCA has been given powers, functions and funding worth £1.14 billion from the Government. It means that decisions about investment in our areas, which are currently taken by central government, will be made locally. However, it is estimated that the region will unlock around £4bn of funding over the coming years because of this devolution deal.

Local authorities still exist as individual councils but the new Combined County Authority, led by a new regional Mayor, will work with all councils across the area to deliver the best possible outcomes for the residents and businesses. There would also be opportunities for private, public, and voluntary sector organisations to contribute and have their voices heard

How does this differ from a Combined Authority?

The Levelling Up and Regeneration Act creates a new type of combined authority for England. The new Combined County Authorities (CCAs) are designed for more rural areas, whereas the existing Combined Authorities (CA) typically cover metropolitan areas.

Combined County Authorities are made of Constituent Councils (upper tier authorities) who are called constituent members, and Non-Constituents such as district or borough councils who are key partners and play a key role in its ability to deliver.

A Mayor of the Combined County Authority

As part of the devolution deal, EMCCA must have a directly elected mayor. The Government believes a Mayor means clearer accountability over local powers, functions and funding.

A key part of the role is to act as an advocate and global ambassador for the Combined County Authority area and the 2.2 million residents who live here.

The Mayor leads the Combined County Authority, working with partner councils, business representatives and stakeholders on areas like transport, housing, regeneration, employment and skills, economic investment and the net-zero ambition.

The Mayor's term of office will run for four years.

The Mayor is directly elected by residents in Derbyshire, Nottinghamshire, Derby and Nottingham. The first election for a regional mayor is happening on Thursday 2 May.

What powers does EMCCA, and the Mayor have?

EMCCA has significant devolved powers and funding across several critical areas:

- **Transport:** Overseeing transportation infrastructure and connectivity.
- **Housing:** Addressing housing needs and development.
- **Skills and Adult Education:** Enhancing educational opportunities for adults.
- **Economic Development:** Promoting economic growth and job creation.
- **Net Zero:** Contributing to environmental sustainability

EMCCA is conferred with functions related to housing, regeneration, and planning. These include improving the supply and quality of housing in the area and securing the regeneration or development of land and infrastructure as well as compulsory purchase, land acquisition and disposal and development of land powers (the exercise of compulsory purchase functions is subject to the consent of all the local planning authorities affected).

EMCCA exercises local transport functions under the Transport Act 1985 and the Transport Act 2000. It can enter into agreements with strategic highways companies and enforce road traffic contraventions. Additionally, EMCCA has the power to implement a workplace parking levy and provide grants to bus service operators.

EMCCA has the power to borrow, a duty to prepare an economic assessment of the Area, will become responsible for Adult education and training functions which will be transferred from the Secretary of State.

The Mayor will chair the new Combined County Authority. The mayor's powers will include the power to designate a Mayoral Development Area and then set up a Mayoral Development Corporation as well as an ability to set a precept on Council Tax to fund mayoral functions and an option to charge a business rate supplement, subject to a ballot of local businesses.

What difference can EMCCA make?

Local decision making tends to result in better local economic performance, as policies are tailored to the needs of specific areas.

Local leaders often know and understand the areas much better than politicians and civil servants based in London, and their knowledge and experience can deliver what is appropriate and what will work for their region, especially when they work with nearby public and private sector partners.

EMCCA has already identified a number of key strategic aims through a strategic framework that sets out an initial broad vision rooted in inclusive growth. It aims to create a prosperous, sustainable, and fairer region by empowering people and businesses to seize opportunities.

The East Midlands underperforms against the national average across a number of core economic indicators, EMCCA will set to utilise its powers, funding and regional profile to tackle these issues and deliver on its objectives.

When will the Mayor take office?

The election for the first regional mayor will take place on 2 May 2024, The official list of candidates for the first East Midlands Combined County Authority (EMCCA) mayoral election is now confirmed and can be viewed by clicking: [**Elections 2024 – East Midlands Devolution**](#)

Where will the Mayor's office be located?

The Mayor will initially have an office based in Chesterfield, which will provide a hub for the Mayoral Office and EMCCA operations. EMCCA will also have hubs of operation right across Derbyshire and Nottinghamshire in

existing local authority locations and elsewhere, the location of these hubs is yet to be identified but will seek to ensure appropriate geographical coverage.

How does the establishment of EMCCA affect local councils?

Councils will continue to have the responsibilities they do now, providing vital services to their communities and championing their towns, rural communities, and cities. This is about moving powers and money from Whitehall to the East Midlands for the benefit of all our communities.

District and Borough Councils will be represented right across in EMCCA governance arrangements as Non-Constituent Members and will play a key role in working with EMCCA to deliver better outcomes for the region.

Will this mean extra bureaucracy and higher cost to taxpayers?

Devolution is about reducing bureaucracy. By taking decisions closer to where they will have an impact, we can reduce the lengthy processes involved with dealing with the Government and secure better outcomes, offering better value for money.

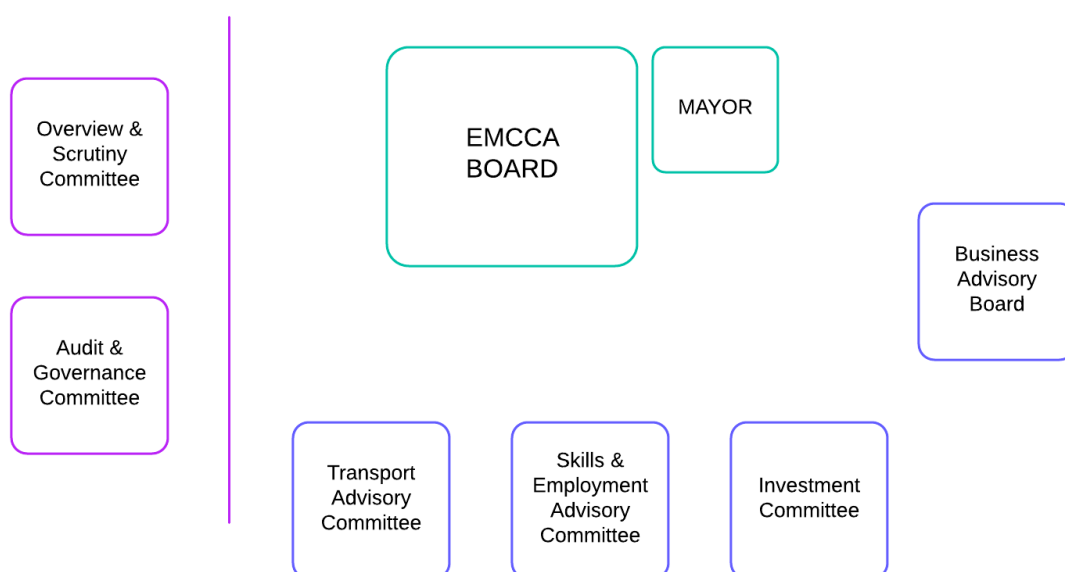
This isn't about adding a layer of unnecessary bureaucracy but moving resources and decision-making powers which already exist from London to the East Midlands and making all this democratically accountable to the people who live here.

As part of the devolution deal, funding has been secured to meet the additional costs of the new arrangements. The mayor will have limited tax-raising powers and would be accountable to the electorate for that decision and how that money is spent. Of the nine existing mayoral combined authorities, eight have this power, but only two have ever actually used it.

What are the governance arrangements at EMCCA?

EMCCA Board agreed the initial version of its governance arrangements at its first meeting on 20 March 2024, this version is based around enabling a minimal governance structure at first that will provide the platform for effective decision-making, strategy development and appropriate oversight and scrutiny, with the potential to build on that as the Combined County Authority develops.

In agreeing the initial version of its governance approach the intention of the Board was not to overcommit on governance arrangements before a Mayor is in place, and propose arrangements that whilst aligning with principles will allow the Mayor to be part of the evolution. The Committee structure at EMCCA initially looks as follows:



The EMCCA Board is the key decision-maker in the structure, it has responsibility for all decision-making outside of mayoral functions. It consists of the Leaders plus one other representative from each Constituent Council

Responsibilities across the structure are as follows:

Sets the strategic objectives	Board
Approves strategy, key policy and frameworks	Board
Sets the Medium-Term Financial Plan	Board
Non-Mayoral function decision-making	Board
Develops strategy, framework and policy proposals	Board and Advisory Committees
Provides investment guidance and advice	Investment Committee
Undertakes strategic level scrutiny	Overview & Scrutiny
Drives Mayoral and Board accountability	Overview & Scrutiny
Provides oversight and assurance of Standards and the Constitution	Audit & Governance
Provides oversight and assurance of sound financial management, governance and supporting frameworks	Audit & Governance
Provides the business voice	Business Advisory Board

How will District and Boroughs be involved?

Constituent Councils have formally emphasised a commitment to a principle of inclusivity when it comes to the involvement of District and Borough Councils, this commitment agreed on 20 March by the Board recognises District and Borough Councils as key partners and commits to:

- collaborate and engage on matters of strategy;
- co-design approaches where appropriate;
- continuously review arrangements to ensure the ability to influence is effectively enabled;
- provide opportunity to impact decision-making through effective Overview & Scrutiny; and
- work collaboratively to ensure communities feel engaged.

District & Borough Councils will be represented on EMCCA Board and all of its wider committees through two seats for each County area, the nominating bodies for each County will agree who these representatives are. The nominating bodies are the Nottinghamshire Economic Prosperity Committee and the Derbyshire Strategic Leadership Board.

There is also a statutory consents process in place that ensures that certain EMCCA decisions are subject to the consent of the local planning authorities affected.

For more information on EMCCA Governance please contact:

Jodie Townsend, Monitoring Officer

Jodie.Townsend@eastmidsdevo.org.uk